

## Elmasonic Accessories - Practicals

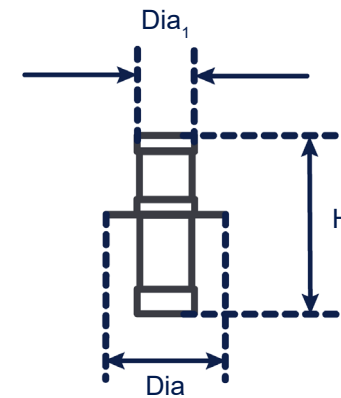
### Drain sieve

- made of stainless steel
- for use in the drain of an Elmasonic ultrasonic device of size 30 to 300
- dirt particles  $\geq 0.15$  mm are caught in the wire mesh of the drain strainer and thus cannot clog the water drain
- Smallest parts  $\geq 0.15$  mm are caught with the drain sieve



Order number	1045648
Dimensions ext. Dia / H (mm)	21 / 35
Diameter sieve Dia <sub>1</sub> (mm)	10
Mesh size wire mesh (mm)	0,15 x 0,15

### Dimension definition



The drawings are meant as a visualization aid and are not true to scale.

Technical specifications serve as orientation values and are subject to tolerances due to production and manufacturing. Proper operation can only be guaranteed when using original Elma accessories.