

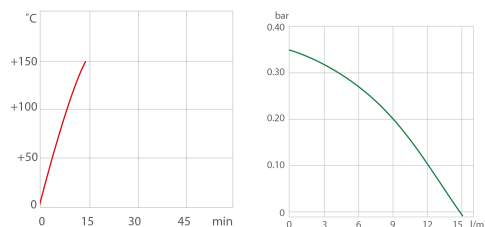
CORIO CD-BC6 Heating Circulator

The new generation of laboratory circulators for routine work and standard tasks

CORIO heating circulators feature professional technology for high standards. These units facilitate internal temperature control in the bath tank or control of externally connected applications.

Your advantages

- Models for internal and external applications
- Bright, white, easy to read display
- Very quiet
- Easy pump change-over between internal and external circulation
- USB connection
- High-quality bath tanks made of stainless steel with bath lid and drain tap
- Integrated cooling coil for counter-cooling



- Heat-up time (thermal)
- Pump capacity (Water)

Technical Data

Order No.	9012506
Model series	CORIO
Category	Heating Circulators
Working temperature range (°C)	+20 ... +150
Temperature stability (°C)	±0.03
Setting / display resolution	0.01 – 0.1 °C
Temperature Display	LED
Heating capacity (kW)	2
Pump capacity flow rate (l/min)	15
Pump capacity flow pressure (bar)	0.35
Bath opening / bath depth (W x L / D cm)	13 x 15 / 20
Pump connections	M16x1
Barbed fittings diameter (inner dia. / mm)	8 / 12
Filling volume liters	4.5 ... 6
Ambient temperature	5...40 °C
Dimensions W x L x H (cm)	24 x 44 x 47
Weight (kg)	10

Included with each unit	2 each barbed fitting for tubing 8 and 12 mm inner dia. (pump connections M16x1 male)
Cooling coil	integrated
Bath tank	Stainless steel
Bath cover	integrated
Available voltage versions	230 V / 50 Hz 208 V - 230 V / 60 Hz 115 V / 60 Hz 100 V / 50-60 Hz

Characteristics



100% Checked.

100% testing. 100% quality. Each CORIO undergoes thorough quality testing before leaving the factory.



Quick start.

Individual JULABO consultation and comprehensive manuals at your disposal.



ATC.

Absolute Temperature Calibration, 1-point calibration (CD).



Safety.

CORIO complies with Class III (FL) according to DIN 12876-1 and switches off automatically in case of high temperature or low liquid level alarm.



Brilliant.

Bright display with strong illumination can be viewed easily from a long distance.



Satisfied customers.

11 subsidiaries and more than 100 partners worldwide guarantee fast and qualified JULABO support.



Connection. Easy.

Inclined pump connections (M16x1) facilitate the connection of applications. Each unit includes 2 barbed fittings of 8/12 mm diameter each.



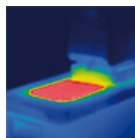
Services 24/7.

Around the clock availability. You can find suitable accessories, data sheets, manuals, case studies, and more at www.julabo.com.



Everything at the front.

All operating controls and safety functions are accessed easily and comfortably from the front.



Solid.

Minimized energy loss through high-quality insulation.



Green technology.

Development consistently applied environmentally friendly materials and technologies.



Stable.

Rubber feet allow for a secured footing of your CORIO to prevent damage to your laboratory equipment.



Handle with ease.

Makes day-to-day work easy. Comfortably move your JULABO Circulator around by using the ergonomic handles (front and rear).



Switch on. And off you go.

Intelligent operating concept. Ready for operation with just a few quick and easy steps.



Internal. External.

The pump is controlled via a lever located directly below the display. Easily change between internal and external circulation.



Tidy.

The special drain tap for easy draining of bath fluids without tools.



JULABO. Quality.

Highest standards of quality for a long product life.



Touching permitted.

Optimum safety. The ergonomic plastic handle protects your fingers from hot surfaces.



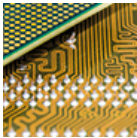
Locked in.

The lockable power plug guarantees safe connection. More process safety.



Unique.

Specially designed pyramids ensure that the condensed liquid drips directly back into the bath.



Modern. Reliable.

Every JULABO Circulator is equipped with high-grade components like i.e. platinum sensors, proven motor technology, CAN-Bus communication and much more.



USB.

Remote control made easy. CORIO CD circulators feature a USB connection.